

W-Z45X-16P

Stainless Steel Non-Rising Rubber Seated Gate Valve

Size: DN50-DN400

Application

Stainless steel non-rising rubber seated gate valves are widely used in municipal facilities, building construction and water source projects in situations with high water quality. Owing to the non-rising design, the valves extensively applied in limited installation space.

Features

- Small fluid resistance
- Corrosion-resistant and long service life
- Unrestricted flow direction
- Good sealing performance
- Installation space saving

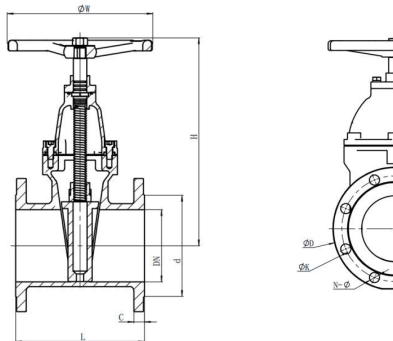
Working Principle

By rotating the hand wheel to drive the valve stem to rotate, the lifting of the valve stem nut can be achieved. The gate valve opens or closes through the lifting of the valve stem nut.

Material

Component	Body	Bonnet	Wedge	Stem
Material	Stainless Steel CF8	Stainless Steel CF8	EPDM Coating	Stainless Steel 304

Dimension



DN	L	D	d	C	f	K	N-φ	W	H
50	178	160	100	16	2	125	4-φ18	180	250
65	190	180	120	18	2	145	4-φ18*	180	270
80	203	195	135	20	2	160	8-φ18	240	290
100	229	215	155	20	2	180	8-φ18	260	330
125	254	245	185	22	2	210	8-φ18	260	360
150	267	280	210	24	2	240	8-φ23	300	405
200	292	335	265	26	2	295	12-φ23	320	520
250	330	405	320	26	2	355	12-φ26	350	630
300	356	460	378	28	2	410	12-φ26	400	710
350	381	520	428	30	2	470	16-φ26	400	800
400	406	580	490	32	2	525	16-φ30	500	860

*Same to the iron flange standard for 4 bolt holes



Specification

- Nominal Size: DN50–DN400
- Nominal Pressure: PN16
- Working Temperature: 0 °C ~80 °C
- Working Medium: Water
- Connection: Flange
- Connection Standard: DN50-200 JB/T 79
DN250-400 HG/T 20592
- Testing Standard: GB/T 13927

Model Description

WATTS	W-	Z	4	5	X-	16	P
Type:	Gate Valve						
Connection:	Flange						
Structure:	Non-Rising Wedge Structure						
Sealing Material:	Rubber Seated						
Nominal Pressure:	1.6MPa						
Body Material:	Stainless Steel						

Installation Instructions

1. The valve has no requirements for the direction of flow, and both ends can serve as the inlet or outlet.
2. The valve can be installed horizontally or vertically, instead of downstairs.
3. The force-bearing point should not be placed on the handwheel to avoid bending deformation of the valve stem during hoisting.