

W-EFCV-20T Series

W-EFCV-20T/16Q-EN-202412

W-EFCV-16Q Series

Electronic Flow Control Valves

Size: DN15-DN150

W-EFCV series Electronic Flow Control Valves serves for fluid control applications such as central air conditioning, heating, water treatment, etc. It is a set of pressure-independent products integrated with flow meter, control ball valve and intelligent actuator.

Features

- Integrated NFC, analog signal, Modbus RTU
- Controlling and monitoring both on site and remotely
- Integrated position control and flow control modes
- High protection level

Operating Principles

W-EFCV series intelligent control valve, receives standard regulating signals (flowrate, valve position) from DDC or PLC by intelligent actuator, compares the measured value with the target value, after a series of advanced PID algorithm, the valve's opening is adjusted in real-time, the pressure-independent control is realized.

Material

Component	Body	Seat	Ball	Stem	O-Ring
Material	Brass (DN15-50)	PTFE	Stainless Steel	Stainless Steel	EPDM
	DI (DN50-150)	PTFE	Stainless Steel	Stainless Steel	EPDM



Specification

- Nominal Diameter: DN15~DN150
- Working Pressure: PN20 (DN15-50 Threaded connection)
PN16 (DN50-400 Flange connection)
- Temperature Range: 4~95°C
- Working Medium: Hot and cold water
- Connection Standard: GB/T 7307 (DN15-50)
GB/T 17241.6 (DN50-150)
- Closing Differential Pressure: 1600KPa(DN15-125)
600KPa(DN150)
- Leakage Rate: ≤0.01%Kvs (DN15-150)
- Power: 24VAC/24VDC(DN15-150)
- Protection Level: Actuator IP54(Thread), IP65(Flange)
flow meter IP65(Thread), IP67(Flange)

Product Type

Type	Size	Working Differential Pressure (kPa)	Closing Differential Pressure (kPa)	Flow Range (m³/h)	Kvs
W-EFCV2015C1X-20T	DN15	25-300	1600	0.38 ~ 1.25	2.5
W-EFCV2020C1X-20T	DN20	25-300	1600	0.81 ~ 2.7	5.4
W-EFCV2025C1X-20T	DN25	25-300	1600	1.29 ~ 4.3	8.6
W-EFCV2032C1X-20T	DN32	25-300	1600	2.34 ~ 7.8	15.6
W-EFCV2040C1X-20T	DN40	25-300	1600	3.9 ~ 13.0	26
W-EFCV2050C1X-20T	DN50	25-300	1600	4.95 ~ 16.5	33
W-EFCV2050E1X-16Q	DN50	25-300	1600	5.7 ~ 19.0	38
W-EFCV2065E1X-16Q	DN65	25-300	1600	9.8 ~ 32.5	65
W-EFCV2080E1X-16Q	DN80	25-300	1600	16.5 ~ 55.0	110
W-EFCV2100G1X-16Q	DN100	25-300	1600	24.0 ~ 80.0	160
W-EFCV2125G1X-16Q	DN125	25-300	1600	30.0 ~ 100.0	200
W-EFCV2150G1X-16Q	DN150	25-300	600	45.0 ~ 150.0	300

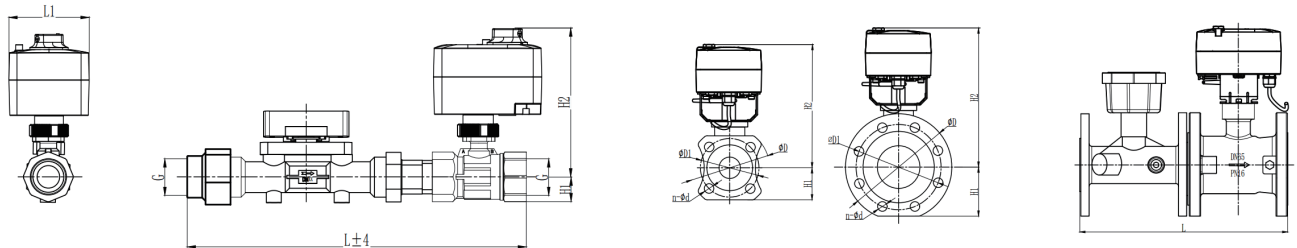
Watts reserves the right to change or modify product design, construction, specifications, or materials without prior notice and without incurring any obligation to make such changes and modifications on Watts products previously or subsequently sold.



Coding Rules

W	WATTS	W-	EFCV	2	015	C1X-	20	T
EFCV	Electronic Flow Control Valves							
2	Two-way							
Size								
015-DN15	020-DN20	025-DN25	032-DN32					
040-DN40	050-DN50	065-DN65	080-DN80					
100-DN100	125-DN125	150-DN150						
C1X	10Nm Intelligent Actuator							
E1X	25Nm Intelligent Actuator							
G1X	50Nm Intelligent Actuator							
Valve Working Pressure	20-PN20		16-PN16					
Valve Body Material	T:Brass		Q:Ductile Iron		C:Ductile Iron			

Installation Dimensions



Dimension Size	Thread(G)	L1 (mm)	L (mm)	H1 (mm)	H2 (mm)
DN15	1/2"	80	202	16	121.5
DN 20	3/4"	80	230	18	126.5
DN 25	1"	80	283	21	126.5
DN 32	1 1/4"	80	320	25	132.5
DN 40	1 1/2"	80	370	30	137.5
DN 50	2"	80	398	36	147.5

Dimension Size	L (mm)	H1 (mm)	H2 (mm)	D (mm)	D1 (mm)	n (mm)	d (mm)
DN50	341	65	238	165	125	4	18
DN65	341	75	248	185	145	4	18
DN80	398	92	256	200	160	8	18
DN100	438	101	272	220	180	8	18
DN125	470	120	282	250	210	8	18
DN150	550	141	297	285	240	8	22

Wiring Diagram :

