

Series W-ECBV-25T

Electric Control Ball Valve

Size: DN15-DN50

W-ECBV series electric control ball valves are widely used in fluid control of central air conditioning, heating, water treatment, industrial processing and other systems. The actuator model used in conjunction is W-A13 series. The actuator receives the standard regulating or switching signals and rotates the ball to the specified position.

Features

- Unique V-shaped inlet design realizes accurate equal percentage flow control characteristics
- Concise structure of flow passage largely avoids blockage, safe and reliable
- High flow capacity, low resistance loss
- Double-seal design, no leakage and double-security
- Ultra-silence channel to ensure quiet environment
- High shut-off pressure, high pressure
- Equipped with manual switch and opening indication
- Valve position holding or zeroing function when signal disconnection

Working Principle

W-ECBV series electric control ball valve is driven by the angular travel actuator W-A13. The actuator drives the valve to change the flow area between the ball and the valve seat by receiving the regulating signal (0-10V or 2-10V or 4-20mA) or switching signal, so as to control the flow rate passing through the valve and realize the automatic regulation function.

Material

Component	Material
Valve Body	Nickel plated brass
Valve Seat	PTFE+EPDM
Valve Ball	Stainless Steel 304
Valve Shaft	Stainless Steel 304
Seal Ring	EPDM

Product Model

Model	Size	Kvs	Supporting Actuator
W-ECBV2015C*-25T	DN15	6.3	W-A13C series
W-ECBV2020C*-25T	DN20	10	
W-ECBV2025C*-25T	DN25	16	
W-ECBV2032C*-25T	DN32	25	
W-ECBV2040C*-25T	DN40	32	
W-ECBV2050C*-25T	DN50	50	



Specification

- Nominal Pressure: PN25
- Working Temperature: -5~95°C
- Protection Level: IP54
- Connection Standard: GB/T 7306.1-2000
- Turn-off Differential Pressure: 1400Kpa
- Flow Characteristics: Equal percentage characteristic curve
- Leakage Rate: Control path $\leq 0.01\%Kvs$
- Regulating Mode: Angular travel 90°
- Working Medium: Air conditioning cold and hot water, $\leq 50\%$ ethylene glycol/propylene glycol solution

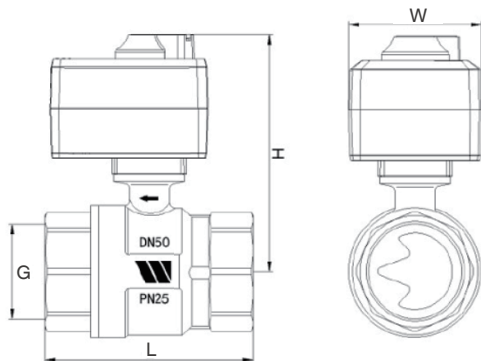
Actuator parameters

- Power supply: Switch/Floating: 24VAC/DC or 100-230VAC
Proportional: 24VAC/DC $\pm 10\%$
- Power consumption: 2W in operation, 0.5W in standby
- Signal: Switch/Floating: 24VAC/DC or 100-230VAC
Proportional: Control and feedback 0-10V or 2-10V or 4-20mA
- Runtime: 60s
- Torque: 10N.m
- Protection level: IP54
- Wire specification: 4x0.55mm², black PVC sheathed wire, 0.5m

Model Description

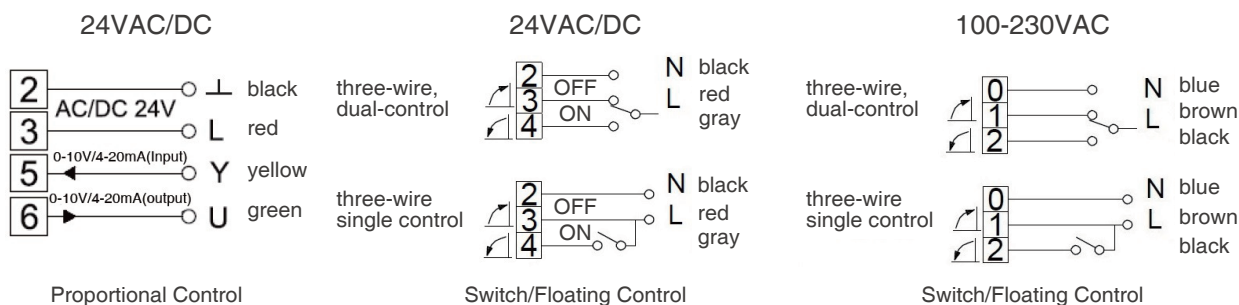
W	WATTS	W-	ECBV	2	015	C-	25	T
ECBV	Electric control ball valve							
Diameter	2: Two-way							
Size								
015-DN15	020-DN20							
025-DN25	032-DN32							
040-DN40	050-DN50							
supporting actuator	C:10Nm,0-10V/2-10V CA:10Nm,4-20mA CF: 10Nm, switch, 24VAC/DC or 100-230VAC							
Pressure-bearing grade	PN25							
Valve body material	Brass							

Installation Dimensions



DN	G	L (mm)	W (mm)	H (mm)
15	Rp 1/2"	61	80	120.5
20	Rp 3/4"	73	80	124
25	Rp 1"	83	80	130
32	Rp 1-1/4"	93	80	134
40	Rp 1-1/2"	109	80	141.5
50	Rp 2"	123	80	150

Wiring Diagram



Installation Instruction

1. The two-way control ball valve is recommended to be installed in the return pipe of the system to reduce the thermal stress on the valve;
2. Use thread that meets the requirements for connection;
3. Please note that the medium flow direction must be consistent with the arrow direction of the valve body during installation.
4. The ball valve can be installed horizontally or vertically, but it cannot be installed upside down;
5. The product leaves the factory in a closed state.