

WS-C313 LCD Screen Thermostat



I. Product Summary:

WS-C313 Series thermostats are designed to control the fans and valves in air conditioner applications via comparison of the room temperature and setting temperature as reaching the aim of comfort and saving energy.

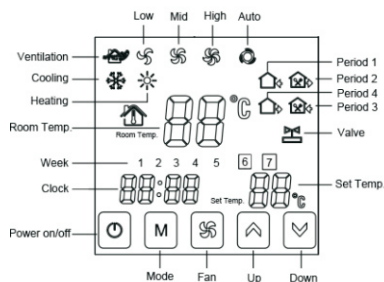
II. Technical Parameter:

Power Supply	AC85~260V, 50/60HZ
Current Load	3A
Power Consumption	<0.5W
External Material	PC+ABS (flame retardant)
Sensing Element	NTC
Set Temp. Range	10°C - 40°C
Accuracy	±1°C
Dimension	86x86x13.3mm
Ambient Temp.	0-45°C, 5-95%RH(Non-condensing)
Storage Temp.	-5~55°C
Installation Box	80x80mm

III. Main Functions and Characteristics

1. Square LCD display, more clear to see.
2. Blue or white back light for customer choose.
3. Two pipe or four pipe for choice.
4. 3 Fan speed+ auto, timer switch for daily or week.
5. With daily programmable function, 4 period settings.
6. Selectable 80mmx80mm hidden box.
7. Precise comfort control keeps temperature within 1°C of the level you set.

IV. User Interface Explanation



V. Model Definition

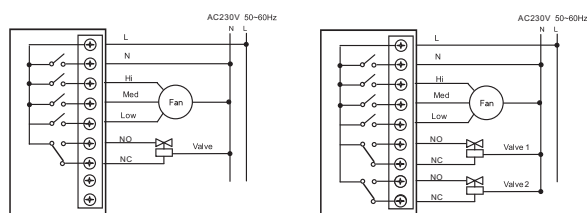
- AC 2: Two pipe, for air conditioning
- AC 4: Four pipe, for air conditioning

For example: **WS-C313**

VI. Model Spec

Model	Spec	Fan Speed	Daily Programmable	Timer Switch
WS-C313-AC2	2 Pipe	3 Fan speed+Auto	✓	✓
WS-C313-AC4	4 Pipe	3 Fan speed+Auto	✓	✓

VII. Wiring Diagram



Two pipe

Four pipe

VIII. Operation Instruction

1. Setting Power on/off

Press **⏻** to turn on/off the power.

2. Setting Temperature

Press **▲▼** to set the temperature. Factory default is 26 °C.

3. Setting the System Mode

Press **M** to select heating, cooling or ventilation. Factory Default is ventilation.

4. Setting the Fan Speed

Press **⚙️** to select the fan speed.

- is Low speed(Factory default);
- is Mid speed;
- is High speed;
- is Auto speed.

In auto mode, the fan will run according to the comparison of room temperature and set temperature.

5. Setting the Day Program Schedules.

Press and hold **M** for 3 sec., hh will flash in the position of hh: mm. Press **▲▼** to adjust the hour. Press **M**, mm will flash in the position of hh: mm. Press **▲▼** to adjust the minute.

The above is the steps to set real time. Then go into day programmable setting.

Press **M**, 1 (for example) will flash in the position of 1234567.

Press **▲▼** to adjust the week.

Press **M**, period 1 and hh will flash.

Press **▲▼** to adjust the hour.

Press **M**, period 1 and mm will flash.

Press **▲▼** to adjust the minute.

Press **⚙️** to confirm the setting;

Press **M**, period 2 and hh will flash.

Press **▲▼** to adjust the hour.

Press **M**, period 2 and mm will flash.

Press **▲▼** to adjust the minute.

Press **⚙️** to confirm the setting;

Press **M**, period 3 and hh will flash.

Press **▲▼** to adjust the hour.

Press **M**, period 3 and mm will flash.

Press **▲▼** to adjust the minute.

Press **⚙️** to confirm the setting;

Press **M**, period 4 and hh will flash.

Press **▲▼** to adjust the hour.

Press **M**, period 4 and mm will flash.

Press **▲▼** to adjust the minute.

Press **⚙️** to confirm the setting;

Press **M**, loop will display in the screen.

One day programmable setting is finished.

6. Setting the Regular Boot

Press **M** for more than 3 seconds, after setting the time, press **S** until and "hh" twinkling. Press **Δ** to adjust the hours.

After the adjustment of hours, press **M** until the "mm" twinkling, press **Δ** to adjust the minutes. After the completion of all adjustments, press **S** to confirm, then does not twinkle, Regular boot setup is complete.

The operation of canceling Regular boot is the same, press **M** to the state of Regular boot, then pressing **S**, the is twinkling, Regular boot has been canceled.

7. Setting the Off Timer

After the setting of Regular boot, press **M** again, until and "hh" twinkling, press **Δ** to adjust the hours. After the adjustment of hours is complete, press **S** until the "mm" twinkling, press **Δ** to adjust the minutes. After the completion of all adjustment, press **S** to confirm, then does not twinkling, Off timer setup is complete.

The operation of canceling Off timer is the same, press **M** to the state of Off timer, then pressing **S**, the is twinkling, Off timer has been canceled. The setting of the third period and forth period are same with the first and second period, the icons are (on, off/into the room, out of the house)

8. Setting the Circulation of Timer Switch

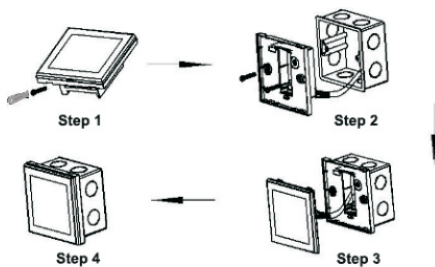
After setting the time of timer switch, press the **M**, there will be "LooP", then press **Δ**, week display area will displays the day of the week, or the transformation of "12345" "123456", or "1234567".

If the screen only displays the day of the week, then the timer switch setting is valid only for the day. If it displays "12345", then the timer switch is valid from Monday to Friday, and Saturday and Sunday will be invalid.

If it displays "123456", then the timer switch is valid from Monday to Saturday, and Sunday will be invalid. If it displays "1234567", then the timer switch is valid everyday.

IX. Installation Instruction

This product is suitable for standard 80*80mm wall box.



1. Connect the line of power and valve into the terminals. Fix the wall plate into the wall box by a screwdriver.
2. Connect the lines with the LCD board.
3. Connect the LCD board into the wall plate.

NOTICE: The installation wire should be 1.5-2.5mm².

X. ATT:

Thank you for buying this product!

Please read this manual for complete instructions on installing and operating your thermostat. If you require further assistance, please feel free to contact us.

In the box you will find:

Model	TOL43-AC
Thermostat	✓
User Manual	✓
Screws	✓
Dryer	✓

Warning:



The symbol means the unit is being installed, it may cause electrical shock hazard during maintaining, so please make sure it is operated by the professional technical worker.

